

Universal Robot Certification Applications **NEW**

Hollow Rotary Actuators

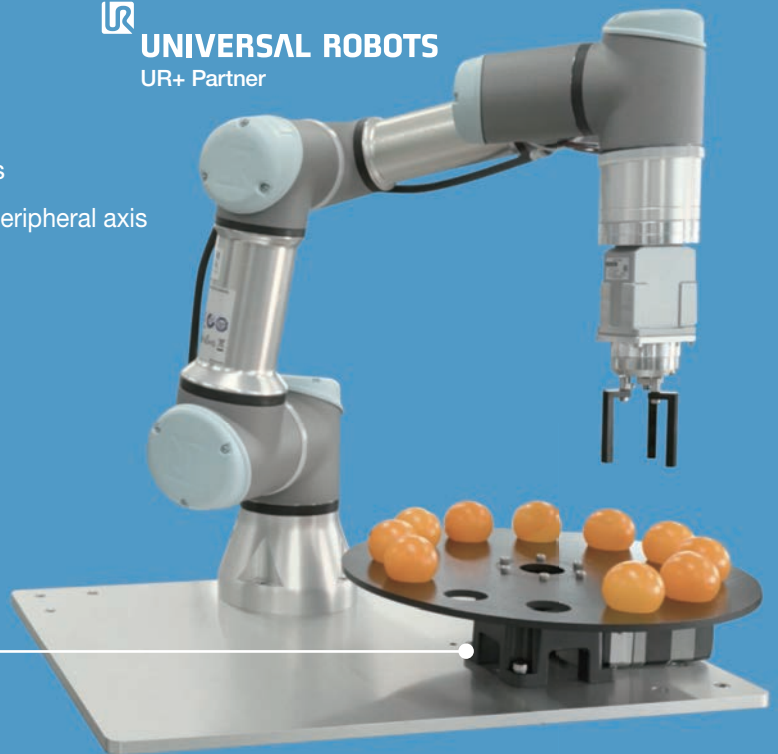
DGII Series

UNIVERSAL ROBOTS
UR+ Partner

- Rotary actuators that can be linked to universal robots
- Can be used for rotation applications around the robot's peripheral axis
- Easily set with URCap



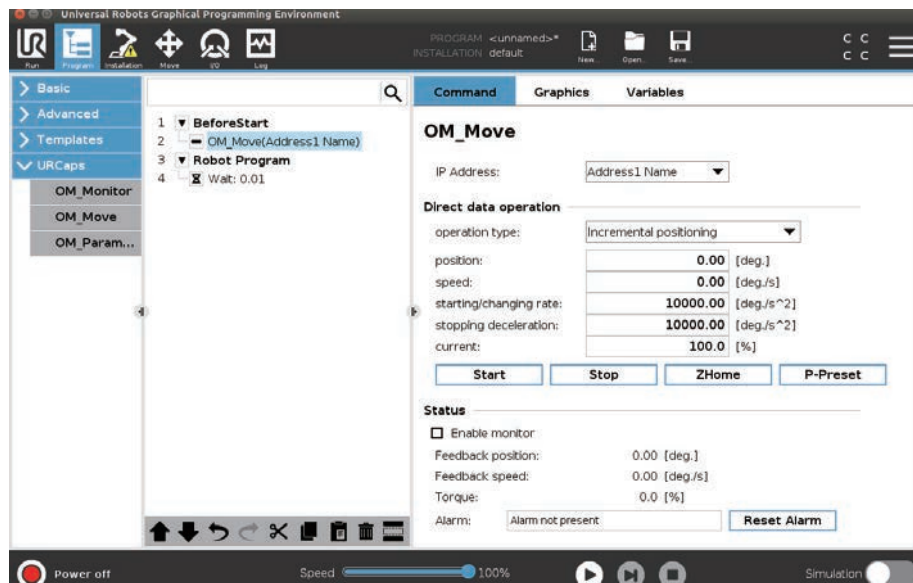
Ethernet Type



Can be Controlled Directly from URCap

Interlinked control of the universal robot and the **DGII** Series is possible with the use of URCap* customized for the **DGII** Series. The universal robot's teaching pendant can be used to set and change the amount of movement, speed, etc.

*URCap is a graphical programming interface for universal robots.



● Universal Robot Product Specifications

URCap Software	OM_DG2-x.x.x.urcap*
Compatible Series	e-Series
PolyScope Version	PolyScope 5.12.2 or higher

* x.x.x. Represents the version information.



● Inquiries about using URCap and about Universal Robot products are not supported by Oriental Motor.

Features of Hollow Rotary Actuators

The **DGII** Series is a line of integrated products that combines a hollow rotary table with **αSTEP** **AZ** Series stepper motors. It can save the time and cost of designing the mechanism, arranging for the necessary parts, assembly, and adjustment.

Point
1

High Precision Positioning

High precision positioning is achieved by combining the motor and the rotary table mechanism.

Point
2

Large-Diameter, Hollow Output Table Makes Simple Wiring and Piping Possible

The large diameter hollow hole (through-hole) helps reduce the complexity of wiring and piping, thus simplifying equipment design.

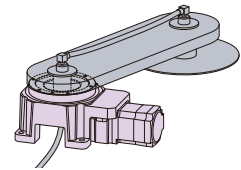
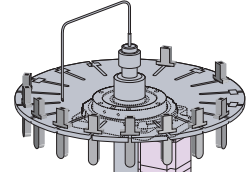
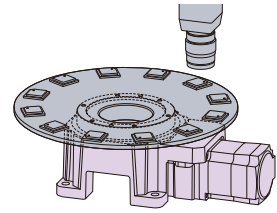
Point
3

High Load and High Rigidity

A cross-roller bearing is used for the bearing on the hollow output table, providing high load and high rigidity. (Except for **DGM60**)

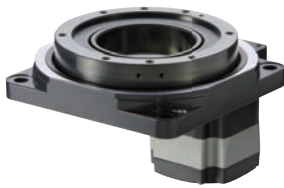
·Max. Permissible Axial Load: 2000 N

·Max. Permissible Moment: 50 N·m

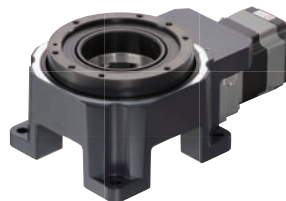


Product Line

The product line includes a type with the rotary table axis and the motor axis assembled in parallel (motor vertical mounting), and a type with the rotary table axis and the motor axis assembled perpendicularly (motor horizontal mounting). Select the type that best suits the equipment's installation space.



Motor Vertical Mounting



Motor Horizontal Mounting



● Applicable Products **DC Input**

Actuators (Equipped with AZ Series)	DGM60 DGM85 DGM130 DGB85 DGB130
Drivers (AZ Series mini driver Ethernet type)	AZD-KREN

● Basic Specifications

Field Network	Modbus UDP
Function	Direct Data Operation
	Monitor
	Parameter Changing

Visit www.orientalmotor.com

For further information (specifications, dimensions, speed-torque characteristics)

Printed in USA 24R #613